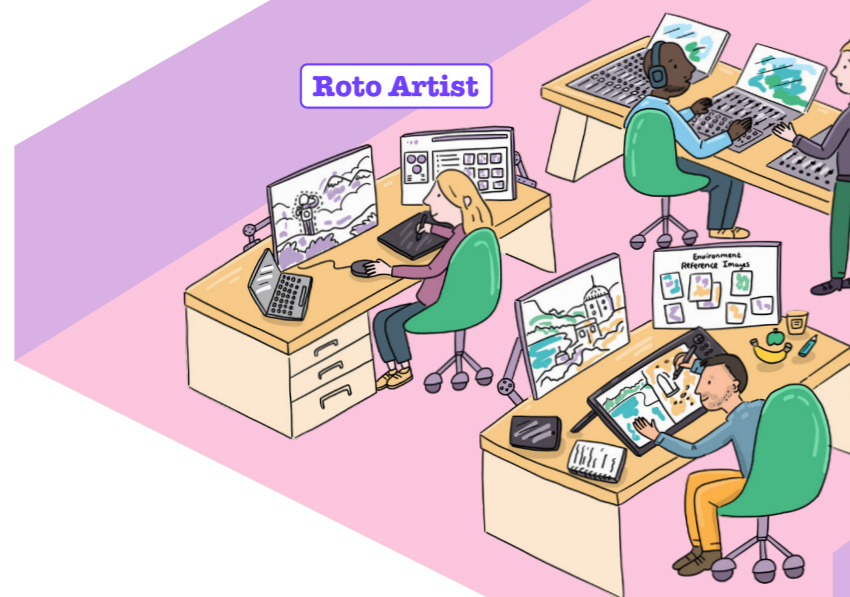


Who works where in film and TV?

Ever wondered who works where in film and TV? To protect ideas and talent, film and TV sets and locations are very often hidden from public view, so you might find it hard to picture who works where and what a working day might look like.

Here you'll find examples of some entry-level screen industry roles and where you would spend some of your time. In some roles, you might work in different settings at different stages of a production. Some jobs, where you aren't based on a set or location the whole time, may give you the option to work from home.

Post-Production Facility



Edit Assistant

Roto Artist

Sound Assistant (post-production)

Post-production Runner

Environment Artist

Locations Marshal

Locations Assistant

Lighting Trainee

Sound Trainee

Floor Runner

Production Office



Script Clearance Assistant

Accounts Assistant

Petty Cash Buyer

Production Runner

Logger

Casting Assistant

Props Trainee

Workshops and Trailers



Hair and Make-up Trainee

Catering Assistant

Assistant Set Decorator

Costume Assistant

Workshop Runner

Stagehand

Trades: carpenter, plasterer etc

Unit Assistant

Set or Location



Camera Assistant

Teachers, download the entire Step into Screen Careers series [intofilm.org/resources/2292](http://intofilm.org/resources/2292)

Find out more about the jobs listed here at [discovercreative.careers/explore](http://discovercreative.careers/explore) and [screenskills.com/job-profiles](http://screenskills.com/job-profiles).  
If you're 13+, follow @getintofilm on TikTok or Instagram to explore the latest screen career opportunities.